

# Installation Guide

## Step 1

Insert the iDes disc into your CD/DVD drive, and then follow the instructions. An autorun page will pop up Figure 1. Step 1 provides an installation startup where a user can choose to install, browse, exit iDes CD installation and visit iDes website. If a user chooses to install iDes step 2 will follow through. If the setup doesn't start automatically, double click the My Computer icon on your desktop, double click the icon for your CD/DVD drive, and then double click the "autorun.exe".

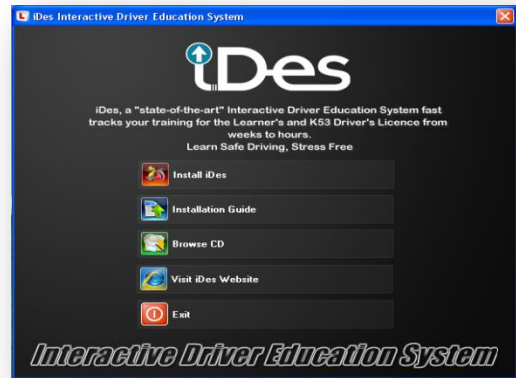


Figure 1: iDes installation startup.

## Step 2

A setup wizard Figure 2 that provides installation tips to make the installation process as smooth as possible. The user can then select next to continue with the installation or cancel if he wishes to do so.

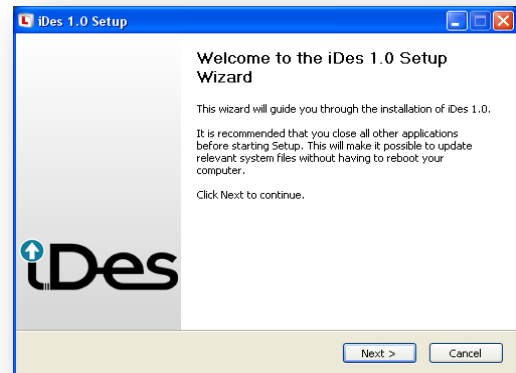


Figure 2: Installation setup wizard.

## Step 3

License agreement Figure 3: Please review the license terms before installing iDes. If you accept the terms of the agreement, click I Agree to continue or Cancel to exit.

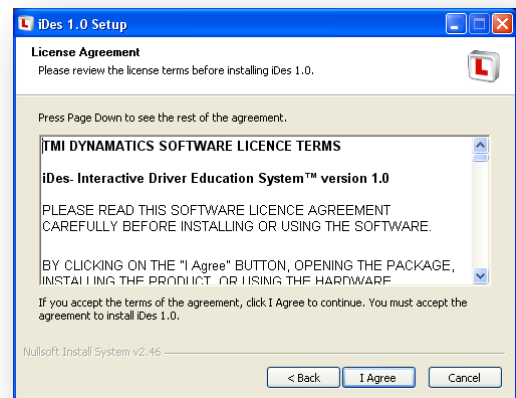


Figure 3: License agreement.

#### Step 4

Choose installation directory Figure 4 for the application installation, the default location “C:\Program Files\iDes” is already provided for the user to make it easier for novices and those that aren’t sure about the process.

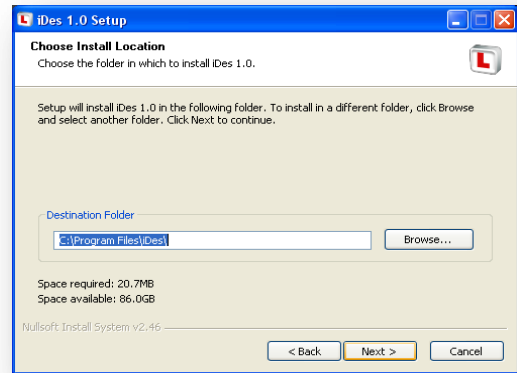


Figure 4: Installation directory/location.

#### Step 5

iDes installation progress Figure 5 starts once the user has completed all the required setup configuration. iDes service requires Java RE and flash player to run, it must be installed on the system, the installation will automatically check if its installed otherwise it will install the included Java RE and flash player. This step will take a few minutes please wait for it to finish.

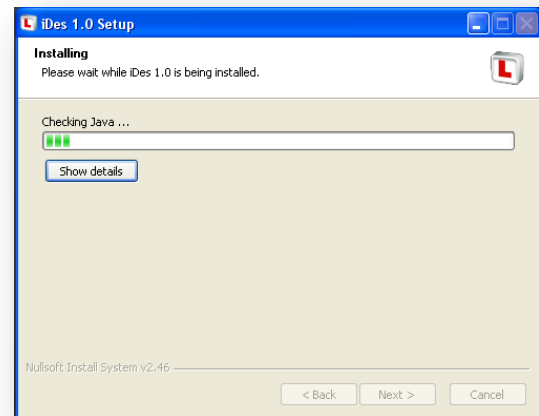


Figure 5: iDes installation progress.

#### Step 6

Completing the iDes installation setup wizard Figure 6 starts up Apache, MySQL and Remote Sync services required by the iDes application. Click finish start iDes application. Wait for all applications to start.

When a user clicks finish the comand prompt Figure 7 will display application services start up namely; Apache server, MySQL and Remote Sync including database configuration. This process also creates a shortcut on the desktop and a start up menu for easy access to iDes.

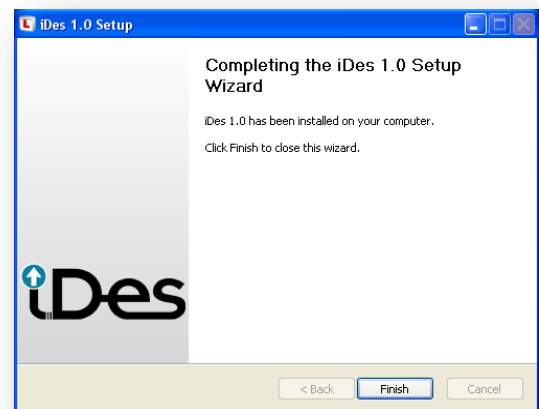


Figure 6: Completing the iDes installation setup wizard.

```
C:\Windows\system32\cmd.exe
Configuring iDes Services. this might take a couple of seconds to complete, please wait
Installing the iDes_Apache service
The iDes_Apache service is successfully installed.
Testing httpd.conf....
Errors reported here must be corrected before the service can be started.
Service successfully installed.
The iDes_MySQL service is starting.
The iDes_MySQL service was started successfully.
Configuring Database. this might take a couple of seconds to complete, please wait
```

Figure 7: Command prompt displaying application startup and database configuration.

### Step 7

Starting iDes: iDes launcher page automatically opens up Figure 8 in a browser when installation is complete. Please click the iDes logo to register or login to use iDes.



Figure 8: Launch iDes control panel.

## Step 10

Register, login or retrieve password. Existing users enter your username and password to login. New users register (internet required). If you have forgotten your username or password use the Forgot Password? Link. Figure 9.

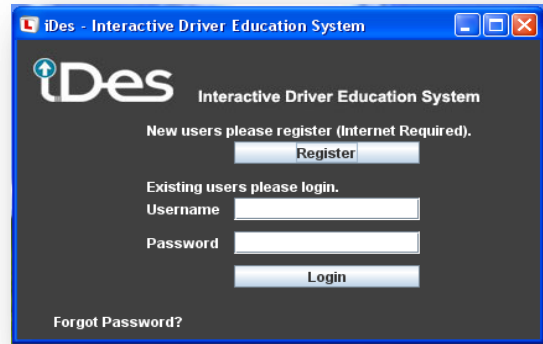


Figure 9: Register, login or retrieve password.

## Step 11

Registration: Fill in the form and continue remember to choose the right license type Figure 10.

**New account** You are not logged in. ([Login](#))

IDES > Login > New account English (en)

**Choose your username and password**

Username\*

The password must have at least 6 characters

Password\*   Unmask

**More details**

Email address\*

Email (again)\*

First name\*

Surname\*

City/town\*

Country\*

**Required Fields**

ID Type\*

ID Number\*

Equity

Nationality\*

Home Language

Gender\*

Citizenship

Date of Birth

Home Address

Postal Address

Phone

Cell

Fax

Province

Disability

Grade

School

Assessor ID

Provider ID

Learner Licence Type\*

There are required fields in this form marked\*.

Figure 10: Registration page

After successful registration a completion page will appear Figure 12 displaying your username and password. It will show briefly how to login. Please click "Close Window" button when done.

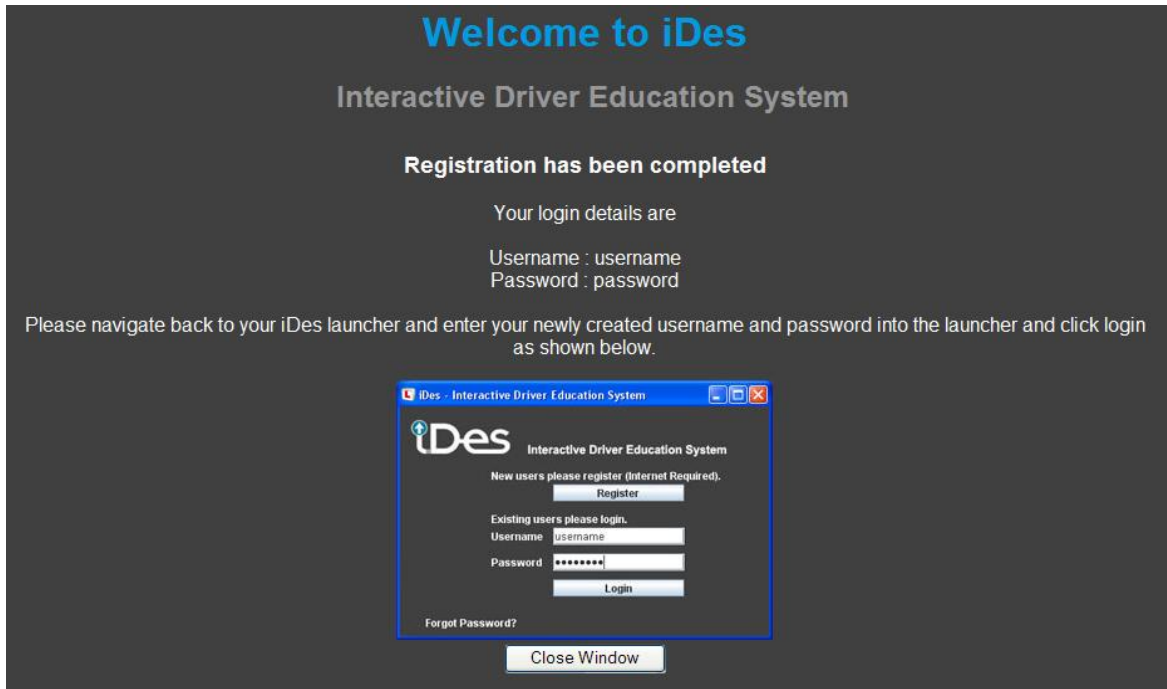


Figure 11: iDes registration complete preview page.

When logged in to iDes depending on if you have time or no time you will be prompted to start e-Learning Figure 12 or continue to getting started and demo content Figure 13 respectively.

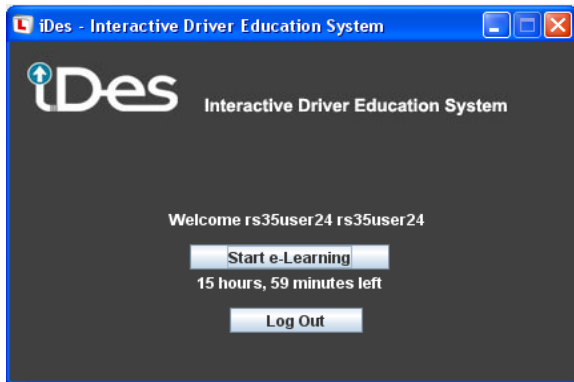


Figure 12: User with time.

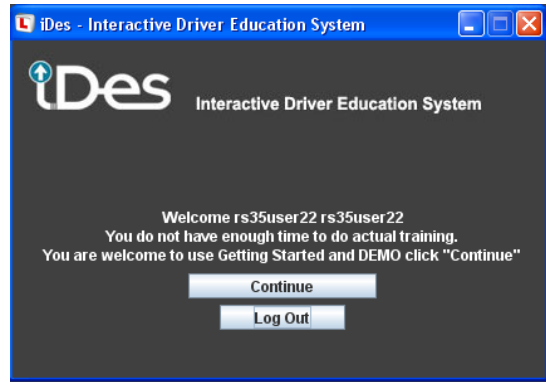


Figure 13: User without time.