

Installing and updating iDes

Administrator rights

Administrator rights are required when installing iDes, applying the patch and when uninstalling iDes.

Installing iDes

When installing iDes a window pops up, if administrator rights are required, see Figure 1. Please fill in the username and password with administrator rights and click ok to proceed with the installation.

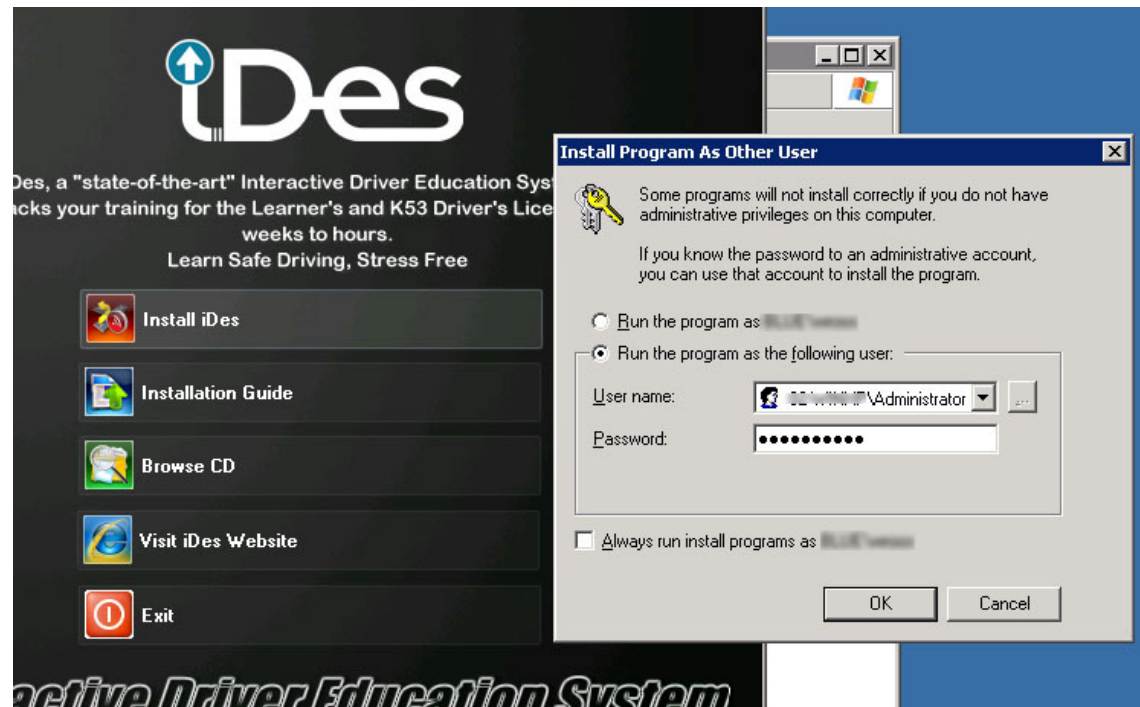


Figure 1 - Install with administrator rights

Installing the patch

On some windows installations the patch doesn't ask for administrator rights and will fail. In this case run the patch with administrator rights by right clicking on the patch_100.exe file and choose "Run as...", see Figure 2. Then fill in the administrator details, shown in Figure 3. If the patch fails to install please reinstall iDes following the steps below and reinstall the patch. If an error still occurs please contact iDes support at support@ides-za.com or call 012-8440312.

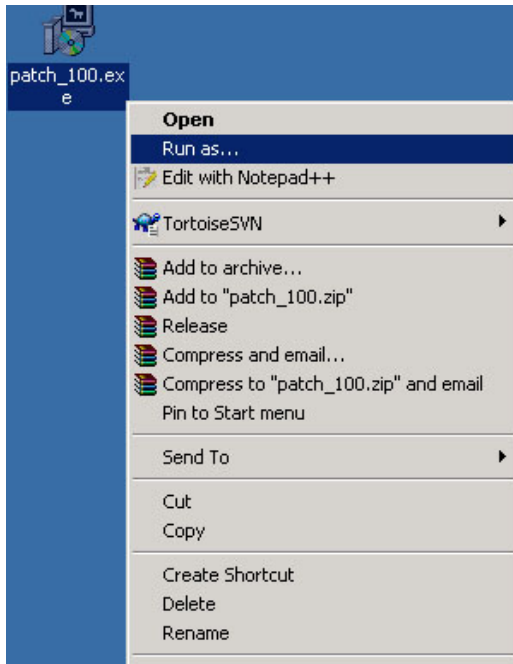


Figure 2 - Right click and choose Run as

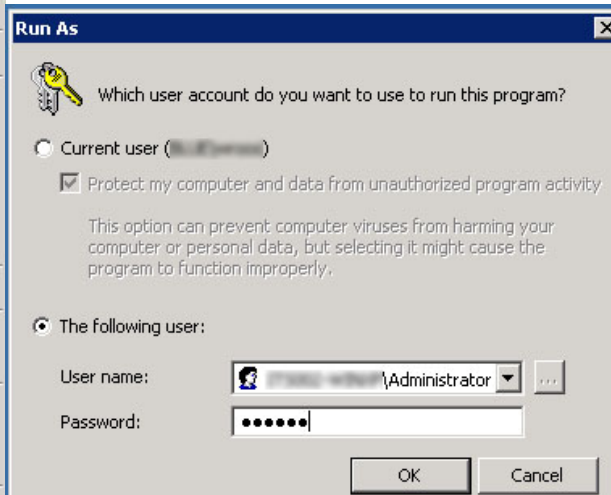


Figure 3 - Fill in administrator details

Uninstalling

When uninstalling iDes please use the Uninstall shortcut from the start menu, right click on it and select Run as... to run it as administrator, see Figure

4.

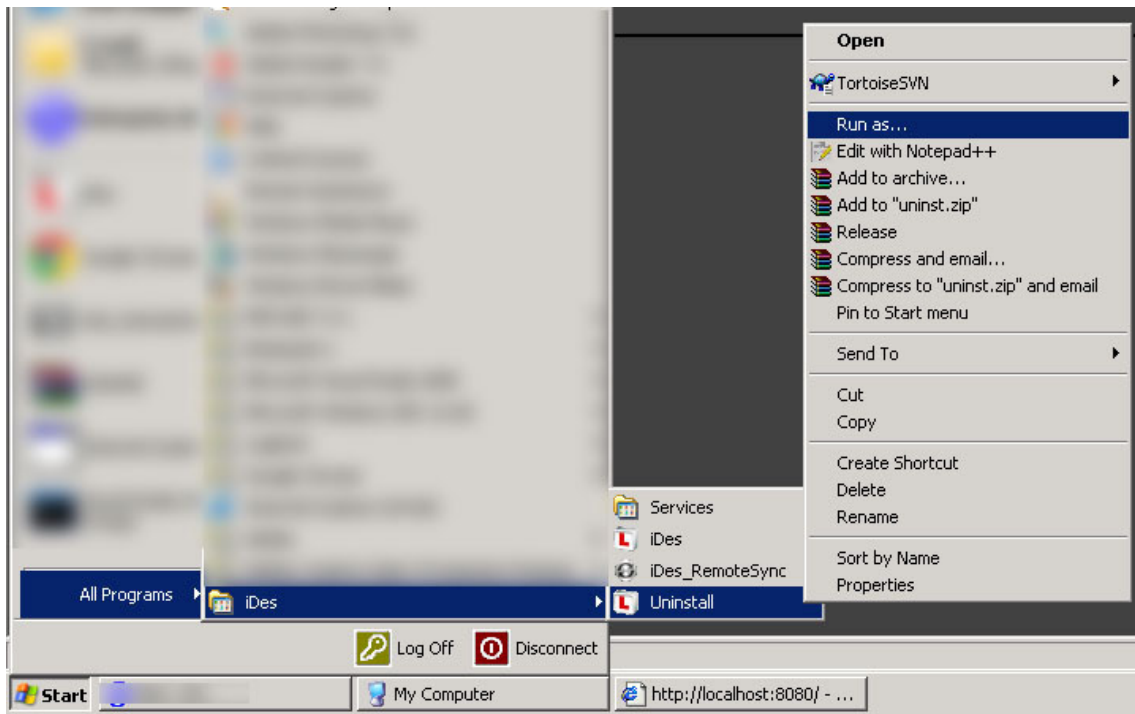


Figure 4 -Right click on Uninstall and Run as administrator

Getting started with iDes

- 1) To start the program double click the “iDes” icon on your desktop (Figure 5)



Figure 5 - iDes icon

- 2) In the popup that appears, select the “Activate button”.
- 3) Type in your CD key, when asked to do so.
- 4) In the next popup select the “Register” option.
- 5) Fill in the form (Figure 6) and make a note of your username and password. Please note that both the username and the password are case sensitive.

New account

Choose your username and password

Username*

The password must have at least 6 characters

Password* Unmask

More details

Email address*

Email (again)*

First name*

Surname*

City/town*

Country*

Required Fields

ID Type*

ID Number*

Equity

Nationality*

Home Language

Gender*

Citizenship

Date of Birth

Home Address

Postal Address

Phone

Cell

Fax

Province

Disability

Grade

School

Assessor ID

Provider ID

Leamer Licence Type*

Figure 6 - Registration form

- 6) In the popup (Figure 7), type in your username and password and select “Login”

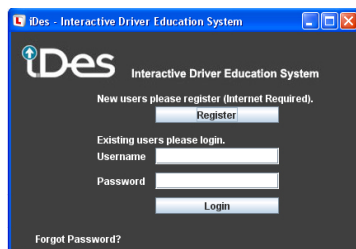
The image shows a login popup window titled 'iDes - Interactive Driver Education System'. The window has a blue header with the iDes logo and the text 'Interactive Driver Education System'. Below the header, there are two sections: 'New users please register (Internet Required). Register' and 'Existing users please login.'. The 'Existing users please login.' section contains two input fields for 'Username' and 'Password', and a 'Login' button. At the bottom left, there is a link for 'Forgot Password?'. The window has standard Windows window controls (minimize, maximize, close) in the top right corner.

Figure 7 - Login popup

- 7) In the next popup (Figure 8), select “Start e-learning”. Note that below “Start e-learning”, you can see how many hours of training you have left.

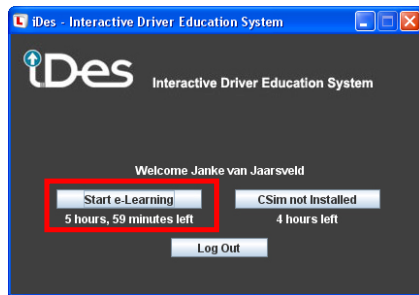


Figure 8 - Start popup

- 8) Press “F11” on your keyboard to get a fullscreen version of the program.
9) Your screen should look as follow (Figure 9).

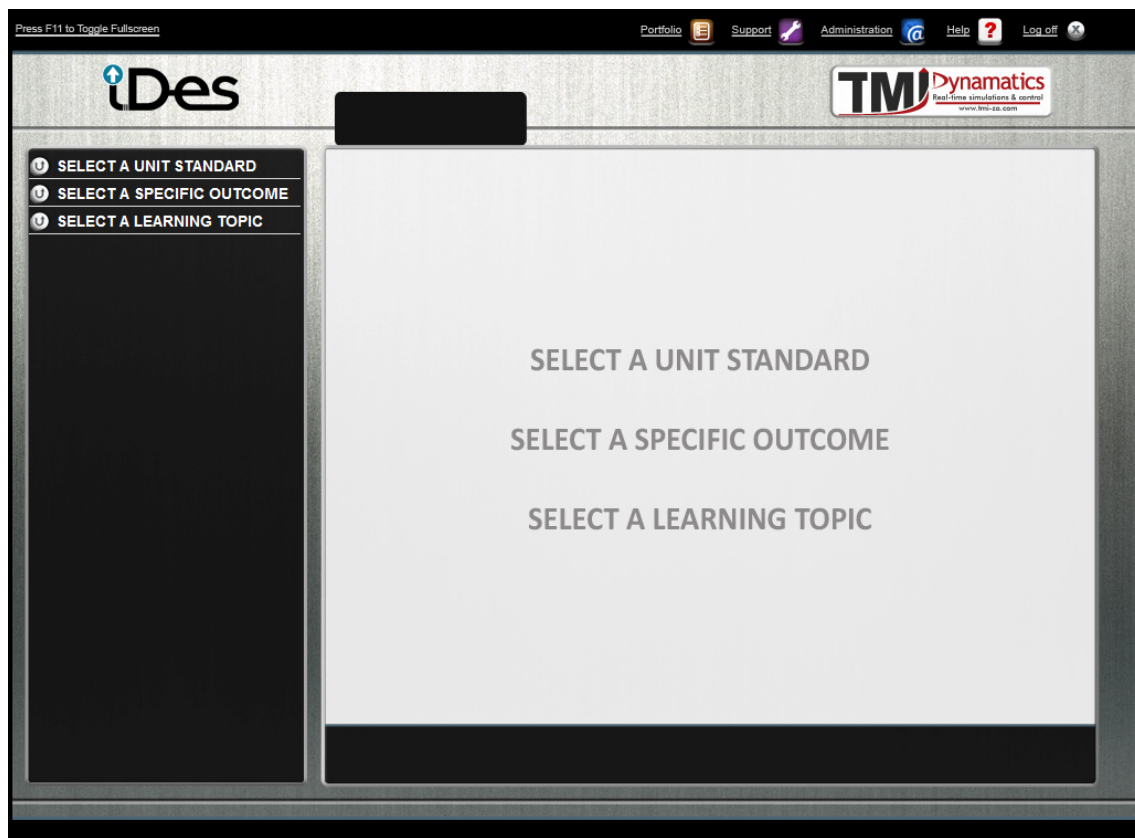


Figure 9 - iDes home page

- 10) The Getting started videos, will explain all your navigation questions. To get to these videos click on the “Select a Unit standard” button (**Error! Reference source not found.:** Number 1). This will open up all available Unit Standards.

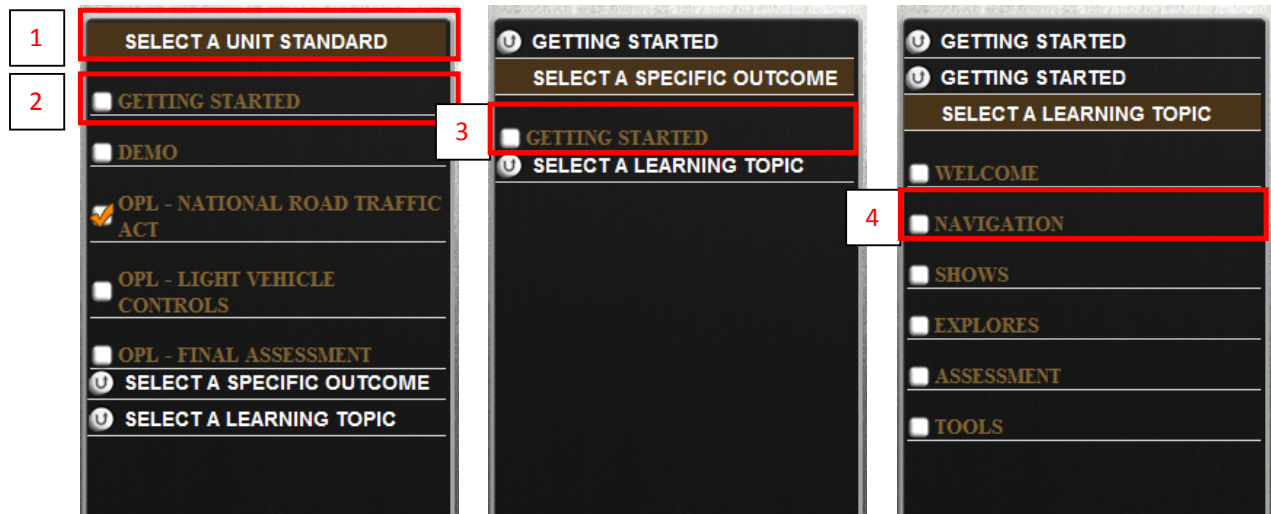


Figure 10 - Navigation

- 11) Next, select the “Getting Started” Unit Standard (Figure 10: Number 2). This will then open up all available Specific Outcomes for the selected Unit Standard (Figure 10: Number 3). In this case, select the “Getting Started” Specific Outcome.
- 12) Next you can select your specific Learning topics. Proceed to the “Navigation” Learning topic first (Figure 10: Number 4). As this will explain how to proceed.

Obtain a provisional licence (OPL)

To reach your learner licence training, select the “OPL-National Road Traffic Act” Unit Standard.

Portfolio of evidence

To view or print your progress, select the “Portfolio button”

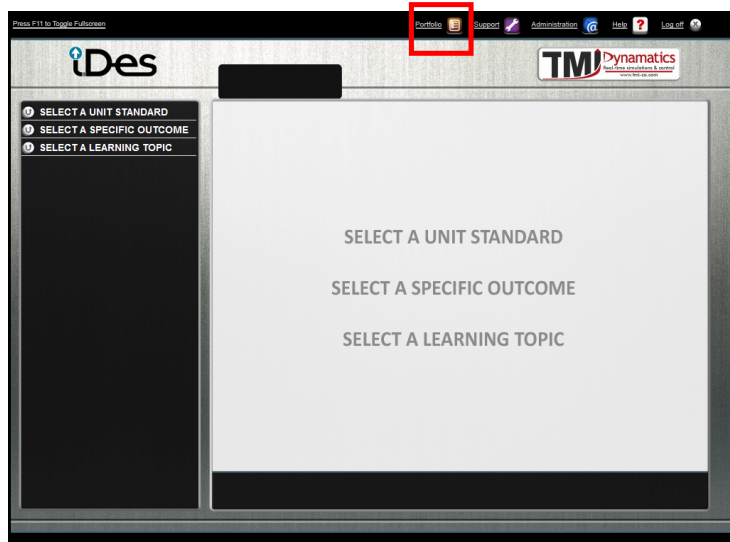


Figure 11 - Portfolio button

- 1) Select the Unit standard you wish to view and press the “Preview” button at the bottom of the page.
- 2) To print your portfolio, scroll right to the bottom of the “Preview” page and select the “Print” button.